



Feature Overview

System 5.5 Fiery Driver 2.0 Features

Demo: Booklet Maker, Interface Shortcuts, Pop up Menus

Fiery Driver 2.0 supports Window XP, 2000, NT, and ME operating systems. The new features are supported only by servers that ship with the latest version of the driver. For earlier servers that do not support the new features, they remain hidden and disabled. The new features of Fiery Driver 2.0 include user customizable shortcuts, Booklet Maker, FreeForm Preview, EFI Job Monitor, draggable watermarks, pop-up menu information, Printer Status tab, and About tab.

Objectives:

- Acquaint users with the new user interface and features of System 5.5
- Demonstrate step-by-step procedure for using Booklet Maker
- Demonstrate how to configure interface shortcuts
- Demonstrate how to activate Pop up menus

Booklet Maker imposition


This feature allows the user to print multiple pages of a print job in a booklet style. The functions included within the Booklet Maker utility include automatic duplexing of a print job; automatic two-up imposition; fixed image size; various output page sizes supported with the exception of custom paper sizes; supports MS Word, Excel, Power Point, and Adobe Acrobat files.

These options allow printed documents to be bound like a booklet by printing two pages of a document onto each side of the paper. The entire stack of pages can then be folded in half at the center position to create a booklet. (Four pages of a document are printed onto one sheet of paper using both front and back sides).

In booklet printing, pages are reordered and printed two-up on each side of a sheet of paper. This allows for folding the paper in the middle to form a booklet with the pages in the correct order. After printing, no further page shuffling is required.

The Perfect Print option allows printed documents to be bound like a booklet, however, the page order sequence is designed for perfect bound imposition, rather than the saddle-stitched imposition described above. Instead of succeeding four-page signatures being nested along the same centerfold, with perfect imposition the succeeding four-page signatures are placed front-to-back. For example, with an 8-page document page 6 and 7 are printed on the front page of the first sheet while pages 5 and 8 are printed to the back page. Pages 2 and 3 are printed to the front page of the second sheet and pages 1 and 4 are printed to the back page. The Perfect Print option is best suited for signatures that are four pages in length, but can be adapted to any number of pages. Additional blank pages are added as necessary.

The Double Print option allows the user to output two copies of the same page in the original file side-by-side. In other words, page n is printed twice, side-by-side, until all other designated



pages have been printed in the same manner. When each of the printed copies is cut in half, the result is two complete sets of the same document.

Constraints:

With Simplex mode ON, first page data is printed twice on the front of the first sheet. Then second page data is printed twice on the front of the next sheet. Nothing is printed on the back of either page. When cut in the center position the result is two complete sets of the same document.

With Duplex mode ON, the first page data is printed twice on the front of the first sheet and the second page data is printed twice on the back of the same sheet. When cut in the center position, the result is two complete sets of the same document.

Speed Print is a variation of the standard Booklet option. It allows printed documents to be bound like a booklet by printing two different pages of a document onto each side of the paper. However, the order is different from the standard Booklet option in that when the document pages are cut in half, they can be combined to form a single complete set of the document in less printing time than the previously described method.

Adjustments for Imposition

Aside from the pre-defined imposition settings, adjustments that affect how the document's printable image is printed/imaged on the paper can be made from Fiery Driver using Creep Adjustments and/or Centering Adjustments.

Because each sheet of paper has a measurable thickness, when pages are folded together, as in the case of the *Booklet Option*, there is an incremental shift in the location of each edge of each page. The result is that the edges of the pages furthest from the saddle's innermost fold appear to move away from the adjacent page edges that are closer to the fold. The shift becomes increasingly apparent as more pages are added to the saddle and distance increases from the centerfold.

Creep allowance helps compensate for this problem by increasing the width of the gutter between pages that are printed adjacent to each other on the same sheet spanning the centerfold. By adding width to the gutter, similar page margins are maintained, even though the distance across the centerfold, from one side of the saddle to the other, is increasing.

Creep allowance is activated when the selected Imposition is *Booklet* or *Perfect* causing the center margin between adjacent pages to be increased to offset page thickness. The amount of increase is dependent on the specified sub-option called *Creep Adjustments* and whether it is set to *Plain* or *Thick*.

The apparent shift in live image area caused by folding multiple sheets of paper together is referred to as *creep* or *binder's creep*. The effect of creep is that the live image area of the pages closest to the centerfold of the saddle appears to move toward the outer margins of the page. Creep becomes more apparent as the number of pages in a saddle increases.

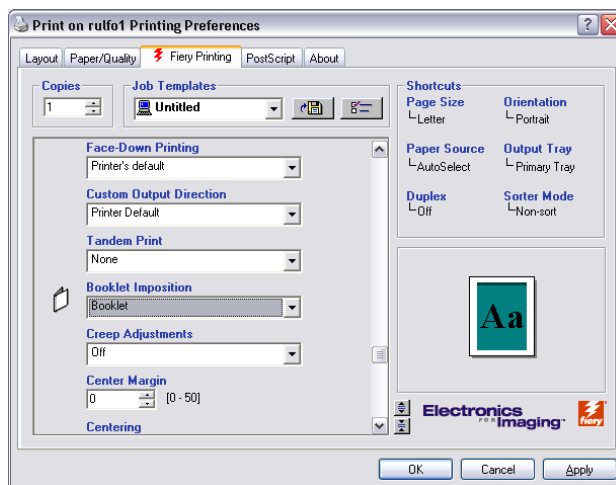
Adjustments for Centering

How the pages of a document are printed and centered on a sheet can be affected by Centering Adjustments. There are five sub-options/adjustments available including XY Centering, Top X Centering, Bottom X Centering, Left Y Centering, and Right Y Centering.

- With XY Centering, the printable image is centered on both the X and Y axis making the live image area equidistant from all sides of the paper.
- With Top X Centering the live image area is printed on the paper such that it touches the top short edge of the paper, while remaining centered on the Y axis.
- With Bottom X Centering, the live image area is printed on the paper such that it touches the bottom edge of the paper while remaining centered on the Y axis.
- With Left Y Centering, the live image area is printed on the paper such that it touches the left long edge of the paper while remaining centered on the X axis.
- With Right Y Centering, the live image area is printed on the paper such that it touches the right long edge of the paper while remaining centered on the X axis.

Booklet Imposition Procedures

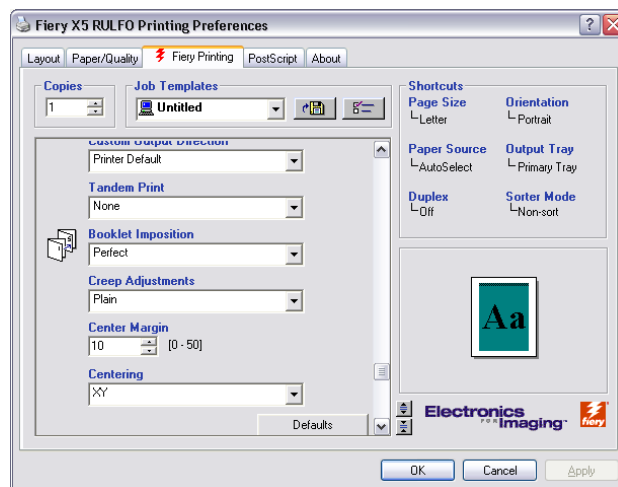
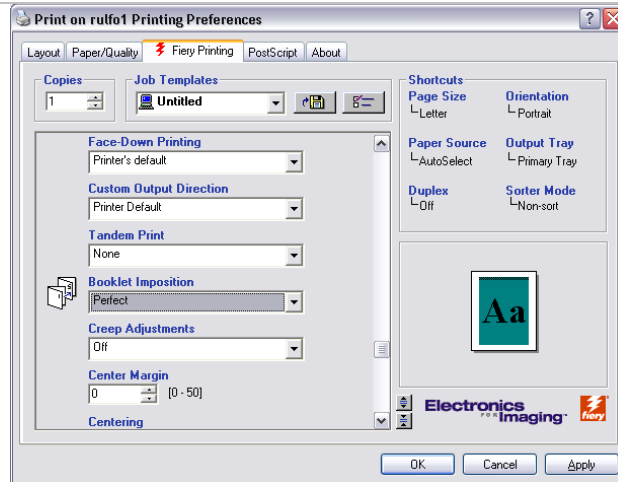
Step 1



Booklet Imposition Procedures

1. In the Active Jobs queue in Command WorkStation, highlight the file called Booklet_Imposition.pdf and double click with your mouse to open the Job Properties window.
2. While watching the blue action bars in the Job Properties menu, scroll down the list to Layout and click to access the PPD options.
3. Under Booklet Imposition, click on the black arrow to the right of the window to see the list of PPD options.

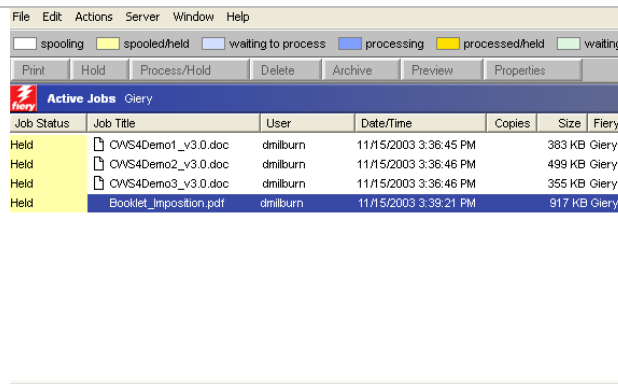
Step 2



Booklet Imposition Procedures

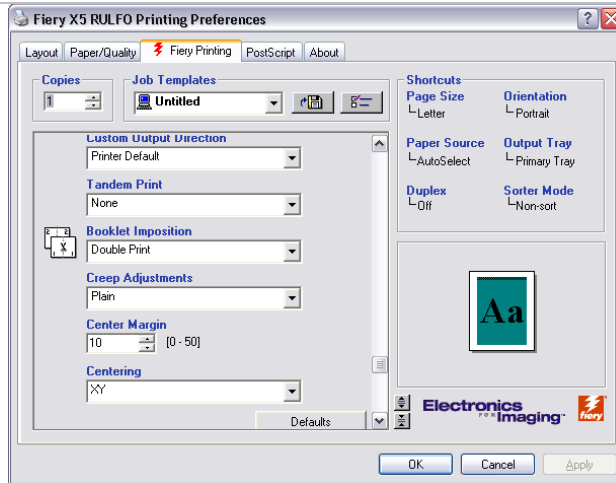
1. From the menu below the Booklet Imposition heading, choose **Perfect** to apply this imposition style to the document called Booklet_Imposition.pdf
2. Under **Creep Adjustments** choose the **Plain** setting unless you're specifically printing on a heavy weight paper stock. In the latter case, choose the Thick setting.
3. Under **Center Margin** enter a value of **10** to represent the width of the gutter between the pages of a 2-up imposition scheme.
4. Under the Centering option choose **XY Centering** so that the content of each page is equidistant from the top, bottom, and sides.

Step 3



1. Highlight the Booklet_Imposition.pdf in the Active Jobs queue of Command WorkStation 4.1.
2. Double click and select **Print** to send the file to the Fiery server/print engine.

Step 4

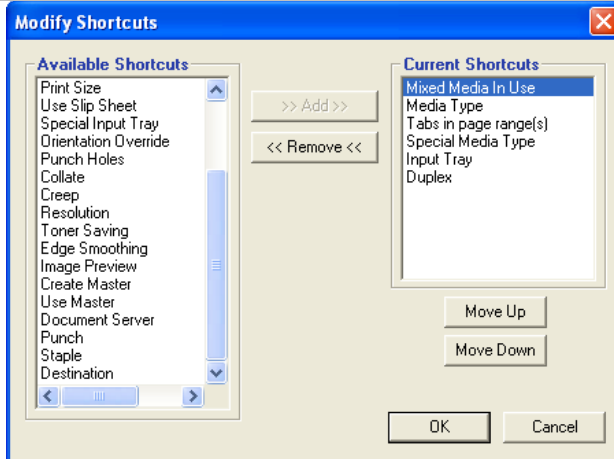


Evaluating the printed Booklet_Imposition.pdf

1. Retrieve the pages from the output tray of your print device.
2. Make a center crease in each 11x17 inch page and nest them so that when folded over the correct imposition sequence is observed.
3. Due to the relatively small number of pages in the document, the visual result of the Creep Adjustment may be difficult to observe. To verify that the setting was utilized, you can measure the width of the gutter between the pages of the 2-up imposition. As pages move further out from the gutter, the width of the center margins on either side of the fold should decrease to maintain consistent positioning of the live area on each page.

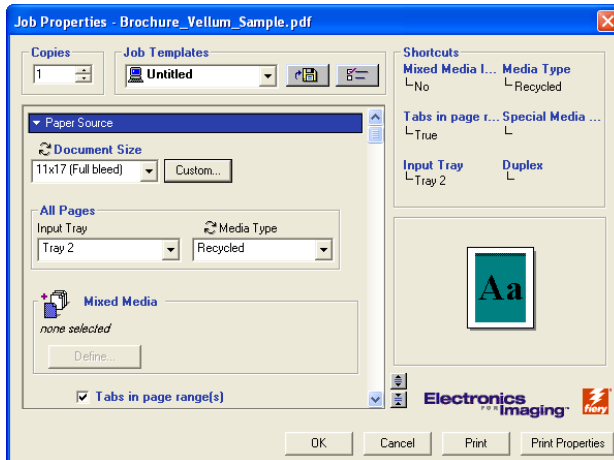
Interface Shortcuts

Step 1



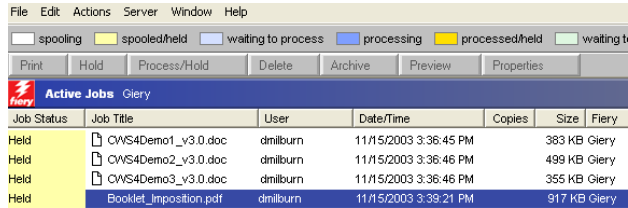
Procedure for Utilizing Interface Shortcuts in Fiery Driver 2

1. From the **Modify Shortcuts** window in Fiery Driver 2, choose half a dozen shortcuts from the **Available Shortcuts** menu on the left side and use the **Add** button to move them to the **Current Shortcuts** list.
2. Use the **Move Up** and **Move Down** buttons to change the order of the shortcuts that you have selected.
3. Click the **OK** button to close Modify Shortcuts window and return to the main Job Properties window.
4. View the new shortcuts in the upper right corner of the **Job Properties** window and verify that they match those you selected in the **Modify Shortcuts** window.



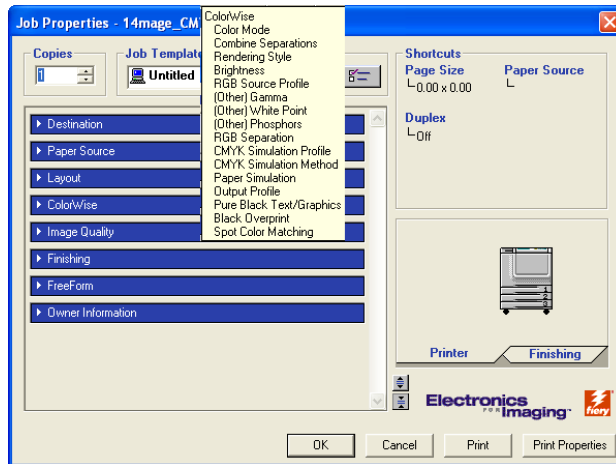
Using Pop-up Menu Information

Step 1



The screenshot shows the Fiery Command WorkStation interface. At the top is a menu bar with File, Edit, Actions, Server, Window, and Help. Below the menu bar is a status bar with buttons for Print, Hold, Process/Hold, Delete, Archive, Preview, and Properties. The main area is titled 'Active Jobs' and displays a table of jobs. The table has columns for Job Status, Job Title, User, Date/Time, Copies, Size, and Fiery. The jobs listed are:

Job Status	Job Title	User	Date/Time	Copies	Size	Fiery
Held	CWS4Demo1_v3.0.doc	dmilburn	11/15/2003 3:36:45 PM	383	KB	Fiery
Held	CWS4Demo2_v3.0.doc	dmilburn	11/15/2003 3:36:46 PM	499	KB	Fiery
Held	CWS4Demo3_v3.0.doc	dmilburn	11/15/2003 3:36:46 PM	355	KB	Fiery
Held	Booklet_Imposition.pdf	dmilburn	11/15/2003 3:39:21 PM	917	KB	Fiery



Procedure for Enabling Pop-up Menu Information

1. Open Job Properties window by double clicking on a highlighted file in the Active Jobs queue of Command WorkStation.
2. Roll the cursor over any one of the blue action bars on the left side of the Job Properties window to activate the pop-up menu.
3. Notice that the first line of the Pop-up menu repeats the name of the action bar you have selected.
4. To close the Pop-up menu move the cursor to another position in the window.